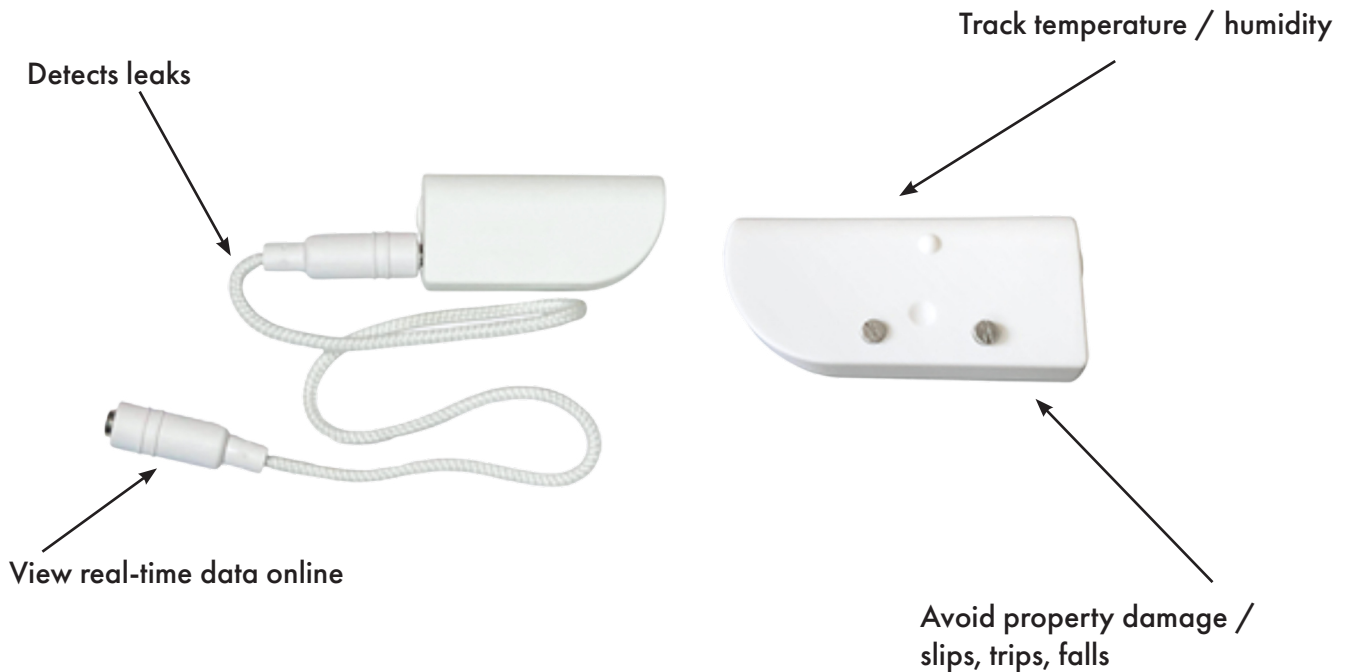


WORKS WITH CONNECT

LEAK DETECTOR

WORKS WITH **CONNECT**



Suitable Uses:

Asset Management
 Sensor Networks
 Smart Buildings
 Smart Factories
 Smart Cities

Suitable Locations:

Cellars and plant rooms
 Near plumbing
 Near HVAC systems
 Server rooms / data centres
 Kitchens and laundries

Features:

Water leakage cable
 Contact sensor
 Accelerometer (optional)
 Temperature / humidity sensor (optional)

Power Source:

2.4Ah 3.6VDC Lithium AA Battery

Dimensions:

69.5 x 32.5 x 29mm